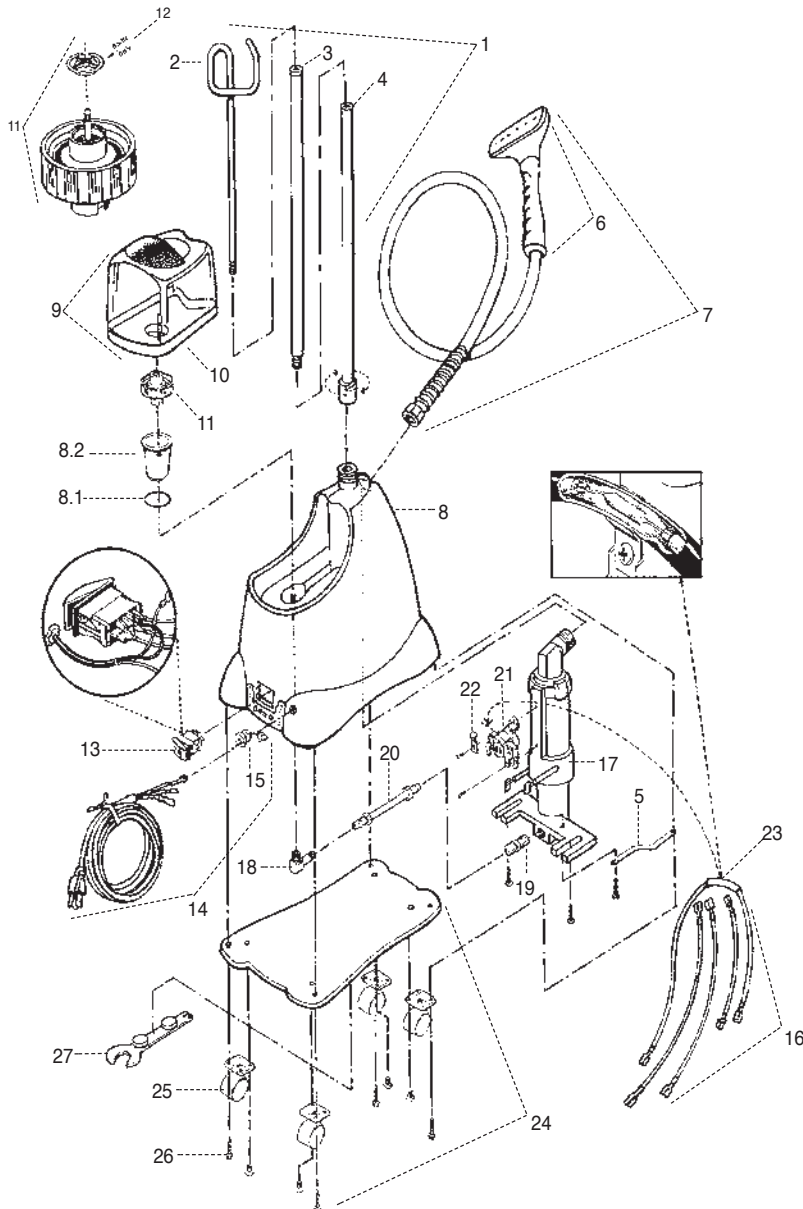


J-2000 Parts Diagram

Should you ever need replacement parts for your Jiffy Steamer, you may purchase them separately. Use this convenient diagram and parts list to identify any part you may need. Please reference the Jiffy Steamer part number, model number and serial number when ordering.



Key #	Part #	Part Description
1	1030	Rod Set and Nut Complete with Metal Studs
2	0035	Hook Section of Rod Set
3	0036	Middle Section of Rod Set (with barrel stud and cap screw)
4	0037	Bottom Section of Rod Set (without Nut)
	0043	Metal Threaded Cap Screw for Rod Set
	0039	Metal Threaded Stud for Rod Sections
5	1102	Grounding Strap for Heating Element
6	0253	Plastic Steam Head/Handle Replacement Kit
7	0251	Plastic Head/Handle Hose Attachment Complete
	0280	Hose Per Foot (Black in Color)
8	1107	J-2000 Beige Housing Kit with Water Cup
	1108	J-2000 Beige Housing Kit without Water Cup
	1107P	J-2000 Pink Housing Kit with Water Cup
	1108P	J-2000 Pink Housing Kit without Water Cup
8.1	1110	O-Ring for J-2000 Water Cup
8.2	1111	J-2000 Water Cup with 90 Degree Brass Fitting and O-Ring
9	1140	J-2000 Water Caddy Complete with Check Valve Cap
10	1141	J-2000 Water Caddy Complete without Check Valve Cap
11	0027A	Replacement Check Valve Cap
12	0027B	Replacement Check Valve Cap Baffle Only
13	1125	Green Lighted Contura Rocker Switch - 120 Volt
	1126	Green Lighted Contura Rocker Switch - 230 Volt
14	0132	Cord Set (16/3 gauge) with Strain Relief
15	0132B	Cord Strain Relief
16	0148	Internal Wire Set
	0597	Heating Unit Kit (wiring included) for Models with Green Lighted Contura Rocker Switch - 120 Volt Cord Set and 4" Water Line
17	0597A	Heating Unit Kit (wiring included) for Models with Green Lighted Contura Rocker Switch - 230 Volt Cord Set and 4" Water Line
	0161A	Heating Unit Assembly (no wiring included) for Models with Green Lighted Rocker Switch - 120 Volt Cord Set and 4" Water Line
	0162A	Heating Unit Assembly (no wiring included) for Models with Green Lighted Rocker Switch - 230 Volt Cord Set and 4" Water Line
18	1131	Brass 90 Degree Elbow Joint - Extended Version
19	1130	3/8" x 1/4" Straight Brass Fitting for Heating Element Housing
20	0591	Copper Tube(4" length) with Nuts and Compression Rings
21	0160	L-290 Thermostat
22	0195	Fusible Link Clamp
23	0151	Fusible Link Wire with Insulated Lug and Clamp
24	1120	Bottom Plate with Casters
25	0011	Bottom Plate Casters (Set of 4)
26	1114	Screws for Bottom Plate (4 Screws Total)

Accessories

1026	"I" Kit - 5.5' Hose with Four Attachments
1050	Jiffy Steamer Assembly Wrench
0274	Brass Hat Nozzle Attachment
0254	Metal Head/Wood Handle Hose Attachment Complete
0256	Metal Head / Wood Handle Only
0262	Wig Hose Attachment
1062	Steam Cleaning "B" Brush Hose Attachment
1063	Brush Only for the "B" Hose Attachment
0899	Liquid Cleaner - 3 Ten Ounce Bottles per Package*

*Not Available for Export

Jiffy Steamer Company, LLC

 jiffysteamer.com

 info@jiffysteamer.com

 1.731.885.6690

 1.731.885.6692

Manufacturing Plant:

4462 Ken-Tenn Highway

Union City, Tennessee 38261

United States of America

J-2000 Wiring Diagram






Worldwide Leader in Steaming
Equipment Since 1940

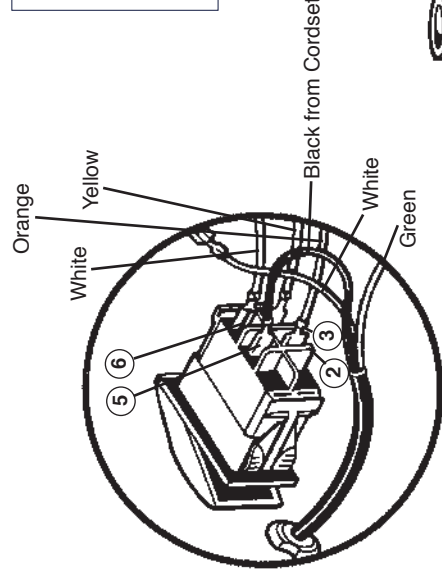
Before attempting any repair on a Jiffy Steamer product, make sure that it is unplugged from the outlet. If you have any questions, please contact our repair department at 1-800-525-4339 between 7:30 AM - 4:00 PM Central Time.

Please note switch terminal 2, 3, 5 and 6 indicated on the enlarged switch diagram are marked on the actual switch. Jiffy® Steamers manufactured before May 2000 are not marked with the terminal switch numbers. Numbers in parenthesis refer to the drawing on on the right.

1. Insert cord set (1) into housing and connect black positive wire (2) from cord set to terminal number 5 on the switch.
2. Connect blue wire (4) from the right side of brass heating element (5) to right side of the L-290 thermostat (6).
3. Insert brass heating element unit into housing. Hand tighten the brass nuts (7) on the water line to the element and to the 90 degree fitting from the cup. Tighten 2 mounting screws (8) at the base of heating element. Now, use a 5/8" wrench to securely tighten the brass nuts on the water line to the element and to the 90 degree fitting from the cup. Heating unit may be loosened and adjusted for a better fit if necessary.
4. Place the 4 inch copper grounding strap as shown in drawing. Secure grounding strap and the green ground wire with the grounding screw by attaching to the heating element ground location (3).
5. Connect white wire (9) from the left side of the heater unit to terminal number 6 on switch.
6. Connect yellow wire (10) from the left side of the thermostat to terminal number 3 on the switch.
7. Connect white neutral wire (11) from cord set bundle to orange fusible link with plastic connector (12).
8. Connect other end of orange fusible link to terminal number 2 on the switch.
9. Set steamer upright and place black plastic strain relief (13) approximately 4 1/2" from end of cord set and insert into housing using pliers.
10. Secure bottom plate with four screws.
11. To avoid leakage, be sure to tighten hose (or hat nozzle) with wrench before using steamer.

Jiffy Steamer Company, LLC

 jiffysteamer.com Manufacturing Plant:
 info@jiffysteamer.com 4462 Ken-Tenn Highway
 1.731.885.6690 Union City, Tennessee 38261
 1.731.885.6692 United States of America



Caution:
Insure that the power cord is unplugged from the electrical outlet before attempting to repair your Jiffy Steamer.

